

1. Purpose:

The Health Overall and Scrutiny Panel (HOSP) of 20th February 2014 received a report from the Integrated Commissioning Unit and Adult Social Care regarding developments to support people with Dementia in Portsmouth. The HOSP requested that it received an annual update. The following report provides this.

2. Background

Vision for Portsmouth Dementia Services

Portsmouth aspires to be a dementia friendly city where people with dementia will be treated with respect and feel included in our local communities. We want everyone to be able to find information and advice regarding memory problems and dementia easily and quickly alongside a diagnosis of dementia as early as possible. We want to see dementia services offering people greater choice and control over their care, enabling individuals to remain independent in their own home for longer and minimising the crises that have previously resulted in lengthy acute hospital stays or admission to long term care.

We aim to have advisory services and peer support networks available to support people with dementia and help their carers and families to access support throughout their journey as and when required. There will need to be a shift away from acute care towards primary and community based service provision, including rehabilitation and reablement.

Portsmouth is signed up to achieving Dementia Friendly Communities recognition as a city. This is a national initiative supported by the Prime Minister's call to action on Dementia. Engaging in this initiative enables us to use the 'becoming dementia friendly' branding in our work for, and on behalf of people with dementia. Portsmouth is one year into the recognition process and is awaiting a response to a recently submitted annual progress assessment. One self-assessed issue is the resource requirement needed to lead this process. A Dementia Friendly Communities coordination function is required. This is planned to be built into a future service specification for community dementia services.

3. Dementia prevalence and diagnosis in Portsmouth

Excellent diagnosis rates are the first element of the Dementia pathway.

The latest analysis of Dementia diagnosis rates confirms that Portsmouth Clinical Commissioning Group (CCG) has already exceeded the national target of two thirds of the predicted prevalence. As at January 2015 Portsmouth's Dementia diagnosis rate stood at 66.13% with 1535 people on Quality Outcome Framework (QOF) Dementia registers. Our estimated Dementia prevalence stands at 2321. We have the best diagnosis rate in the Wessex region and are among the top 10 CCGs across the country. We have been recognised as a beacon CCG both within the Wessex region and nationally. The Portsmouth CCG Primary Engagement Team continues to encourage GP Practices to continue to increase diagnosis to achieve Portsmouth's current ambition of 70% diagnosis.

4. Dementia pathway pilots

The Integrated Commissioning Unit on behalf of the CCG commissioned two Dementia service pilots from the non-current CCG funding stream. These were developed to test elements of a community orientated dementia care pathway to meet the needs of people newly diagnosed with dementia and support them and their carers through the course of their illness.

Two further pilots dementia pilots have been running concurrently with the CCG funded pilots which were initiated through Department of Health non-recurrent reablement grant funding.

The table below summaries all of these pilot projects;

Provider	Project	Commenced	Ending	Cost (annual)	Funded by:
Alzheimer's Society	Dementia Advisers	May 2014	30 th April 2015	£162k	CCG non-recurrent funding
Alzheimer's Society	Dementia Memory Cafes, Dementia Network, CRISP Training (training for carers)	October 2013	30 th April 2015	£79k (this pilot has had one extension of 6 months)	CCG non-recurrent funding
Housing 21	Dementia Voice Nurse End of Life and complex dementia care	2013	June 2015	£63,250k	DoH reablement grant funding stream
Solent Mind	Dementia reablement advisers	2013	June 2015	£92,880k	DoH reablement grant funding stream

The CCG funded pilots were due to end in April 2015. At the CCG's Clinical Strategic Committee meeting of the 4th March 2015 it was agreed that funding for the Alzheimer's Society pilot projects should be extended until the end of 2015 in order to undertake service design activity based on the learning from the experience and successes of the pilots, with a view to commissioning a longer term community Dementia support service from January 2016.

Funding for the Reablement Dementia pilots is due to end in June 2015 and current providers have been encouraged to submit applications for further funding for the 2015/16 round of reablement grant funding.

5. University of East London Dementia Pathway Review Report January 2015

To support future decisions as to the shape of the Dementia service pathway, the University of East London was commissioned to review current services. The Final Report was received in January 2015.

This review report was commissioned by the Integrated Commissioning Unit and funded by the CCG. It aimed to independently inform commissioners and stakeholders by developing a knowledge base and a critical understanding of how dementia services are experienced in Portsmouth.

The review took place between May 2014 and January 2015.

Key headlines from the main findings of the report are;

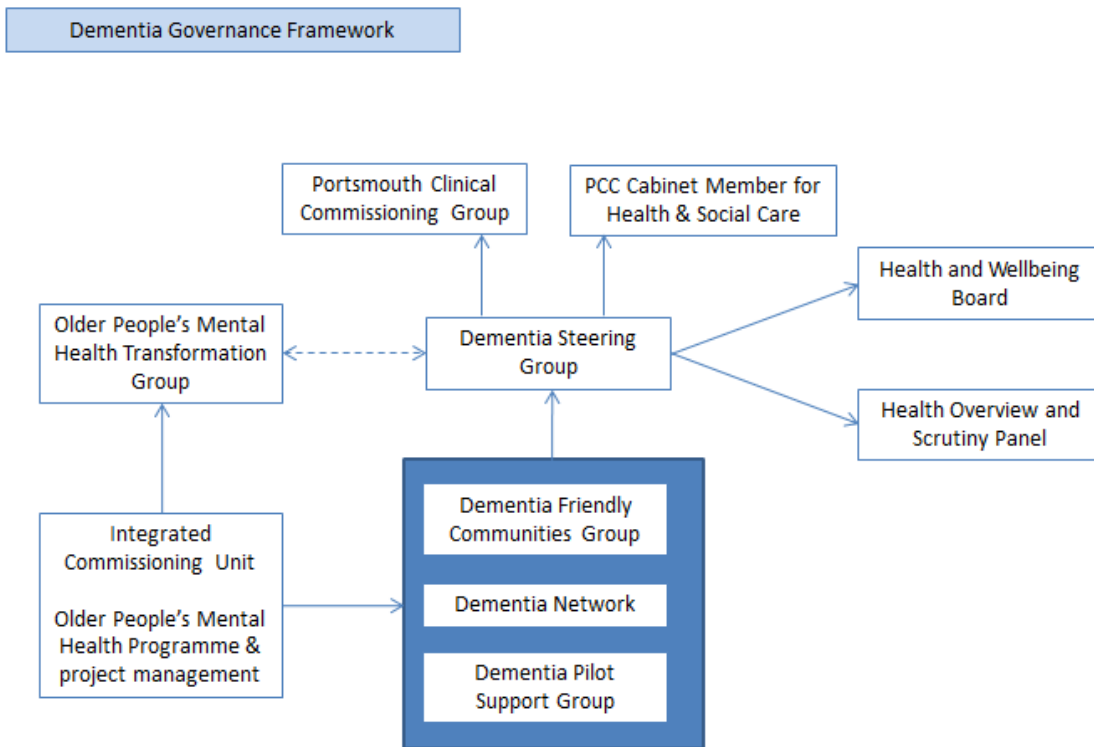
- Practice overlap arising from lack of clarity of function and roles across the different pilots
- Questionable as to whether people with Dementia are currently on a 'service pathway' - which would signify an explicit route to follow
- The pathway has evolved into a collection of services that are difficult to access outside of crisis
- The ultimate challenge is to meet the needs of increasing numbers of people with dementia, whilst moving away from a disjointed, reactive provision that focuses on crisis resolution
- Local provision needs to proactively engage with and accompany people throughout their dementia journeys providing help to identify resources that will enable them to live well as possible with dementia
- Reluctance of people to engage with dementia services until crisis

Major recommendations include:

- More focus on prevention rather than interceding at crisis points
- Proactive following of people with dementia and their carers throughout the course of the illness
- A re-branded Dementia Adviser service having an integral role in service delivery
- Reconfiguration of Dementia memory cafes
- Building on the success of the Dementia Voice Nurse
- Longer term contracts for chosen service providers coordinated or delivered by one provider to ensure continuity and avoidance of role and function duplication and competitive styles of working.

6. Dementia Action Group

The Dementia Action Group (DAG) continues to lead on the coordination of activity to progress and develop our response as a city to supporting people with Dementia, their carers and becoming a Dementia Friendly Community. The Group at its meeting of 11th March 2015 reviewed its terms of reference and is now evolving into a more strategic group which oversees the Dementia Action Plan with a view that 'action' itself happens and is coordinated within the Dementia Network which will itself evolve into a citywide Dementia Action Alliance. The proposed new governance framework being as follows;



7. Next Steps

During 2015 the Integrated Commissioning Unit will continue working with all stakeholders to develop the Dementia service pathway and commission services from January 2016 to deliver the following high level outcomes;

- People with Dementia will be supported during their Dementia journey
- Carers of People with Dementia will be supported
- Portsmouth will become a Dementia Friendly Community

We will require any commissioned service(s) to respond to, and deliver the following 10 expectations;

1. The service will provide opportunities in groups for meaningful activities for People with Dementia and carers that enable social interaction, cognitive stimulation and information to be sought and shared.
2. The service will develop processes and information sharing protocols with primary and secondary health services to proactively ensure that People with Dementia and their carers are offered ongoing support.
3. The service will provide a named contact for People with Dementia and their carers who will be available to support identified and emerging needs of both during the course of the condition.
4. Such named contacts will coordinate services on behalf of the Person with Dementia and their carer irrespective of the location of the clients - i.e. whether living at home, care home or during hospital episodes. During the latter the named contact will coordinate services to enable timely discharge and support to continue living well in the community.

5. The service will work with primary care to ensure maximum awareness of the service, to develop Dementia aware General Practices and support the increase in Dementia diagnosis.
6. The service will work with specialist secondary care providers of services for people with Dementia and social care staff to ensure good information sharing, liaison, coordination and support for People with Dementia
7. The service will have the skill and capability to respond to coordinating the support needs of the spectrum of people with Dementia from mild to severe.
8. The service will be responsible for developing Portsmouth as a Dementia Friendly city.
9. The delivery model will need to align with the emerging locality approach to the delivery of Portsmouth's adult health and social care services, i.e. the development of North, Central and South localities
10. The service will develop innovative and cost saving approaches to ensure maximum value and excellent use of resources and be able to demonstrate real difference to the wellbeing of People with Dementia and their carers

Report prepared by:

Mark Paine, Senior Project Manager ICU (Dementia Lead) & Kerry Pearson, Senior Programme Manager (OPMH Lead)